



FILMING BROCHURE

YOUR SPACE. YOUR STORIES.

THE VENUE

Printworks comprises of seven urban spaces arranged over multiple levels with a maze of corridors, dark shadowy corners and historical industrial features. The venue offers 12,800 sq. m of spaces, each offering unique dimensions and character. A further 998 sq.m of outdoor space is also available, as well as a rooftop and parking for unit bases, crew and production vehicles. Located in Canada Water, the venue has great transport links to central London. Printworks is the ultimate blank canvas for filming with masses of creative, flexible and inspiring infrastructure.

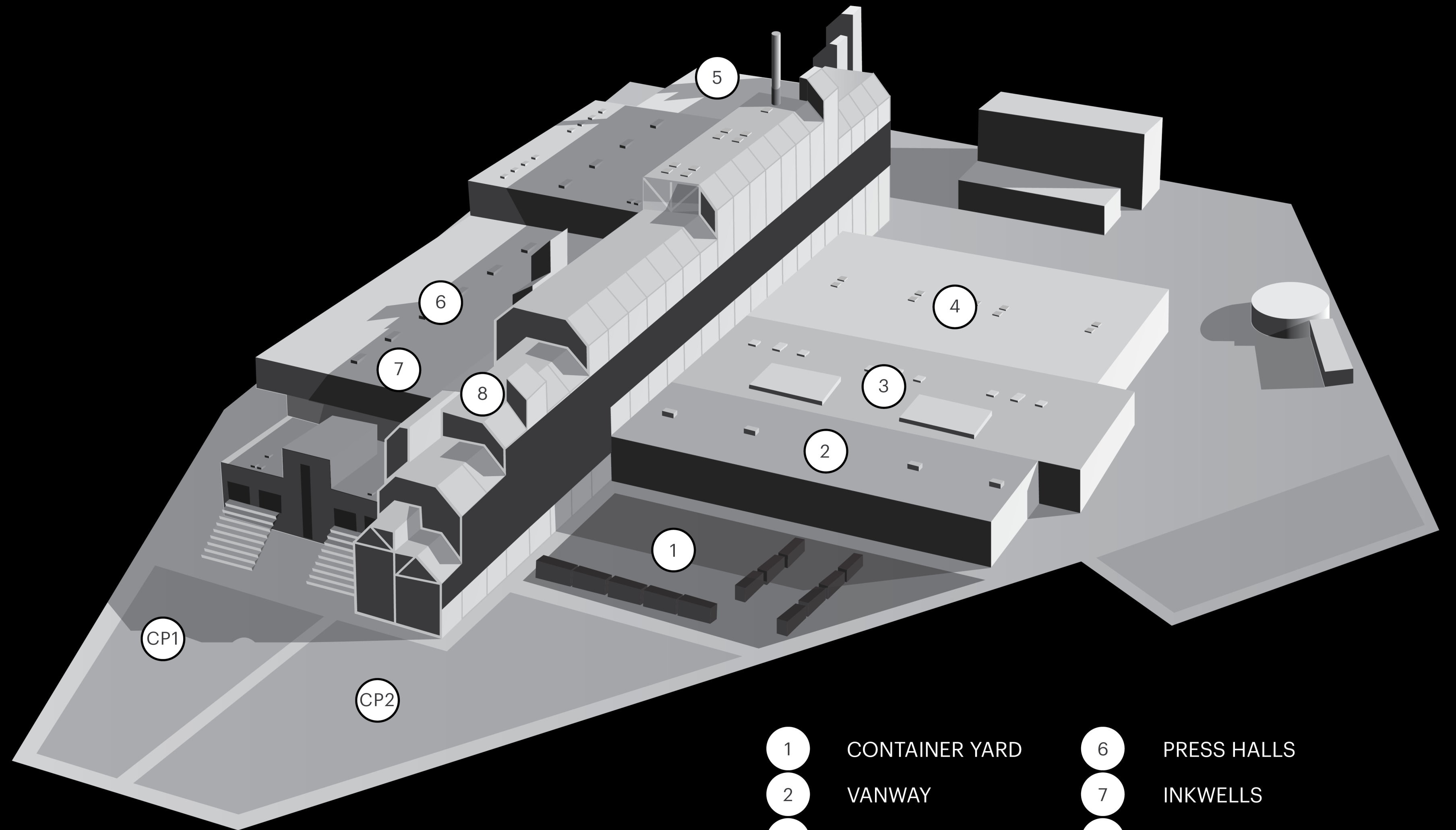
FEATURES

Printworks offers a diverse and wide mix of features suitable as a backdrop or as part of the set infrastructure, such as:

Warehouse, industrial, corridor, office, balcony, car park, cavernous, rooftop, city view, cabin, control room, pods, prison, spaceship, factory, club, bar.



OVERVIEW MAP



- | | | | |
|---|----------------|-----|-------------|
| 1 | CONTAINER YARD | 6 | PRESS HALLS |
| 2 | VANWAY | 7 | INKWELLS |
| 3 | PUBLISHING | 8 | THE ROOFTOP |
| 4 | HSBC | CP1 | CAR PARK 1 |
| 5 | CONTROL ROOM | CP2 | CAR PARK 2 |

DIMENSIONS AND CAPACITY

*to lowest point of festoon

Key Info

Maximum available space: 12,819 m²

Power 3 Phase

Crew Parking 100+ spaces

Spaces	L (m)	W (m)	H (m)	M ²
Container Yard	39	26	5.2*	1,014
Vanway	65	20	6	1,300
Publishing	64	28	2.7	1,792
HSBC	66	35	5	2,310
Control Room	32	23	2.8	736
Inkwells	118	8.5	2.7	935
Press Halls during music season (May – Sept)				
Live Side	65	13	16.8	845
Electronic Side	80	13	16.8	1,040
Press Halls outside music season (May – Sept)				
Live Side	88	13	16.8	1,144
Electronic Side	131	13	16.8	1,703

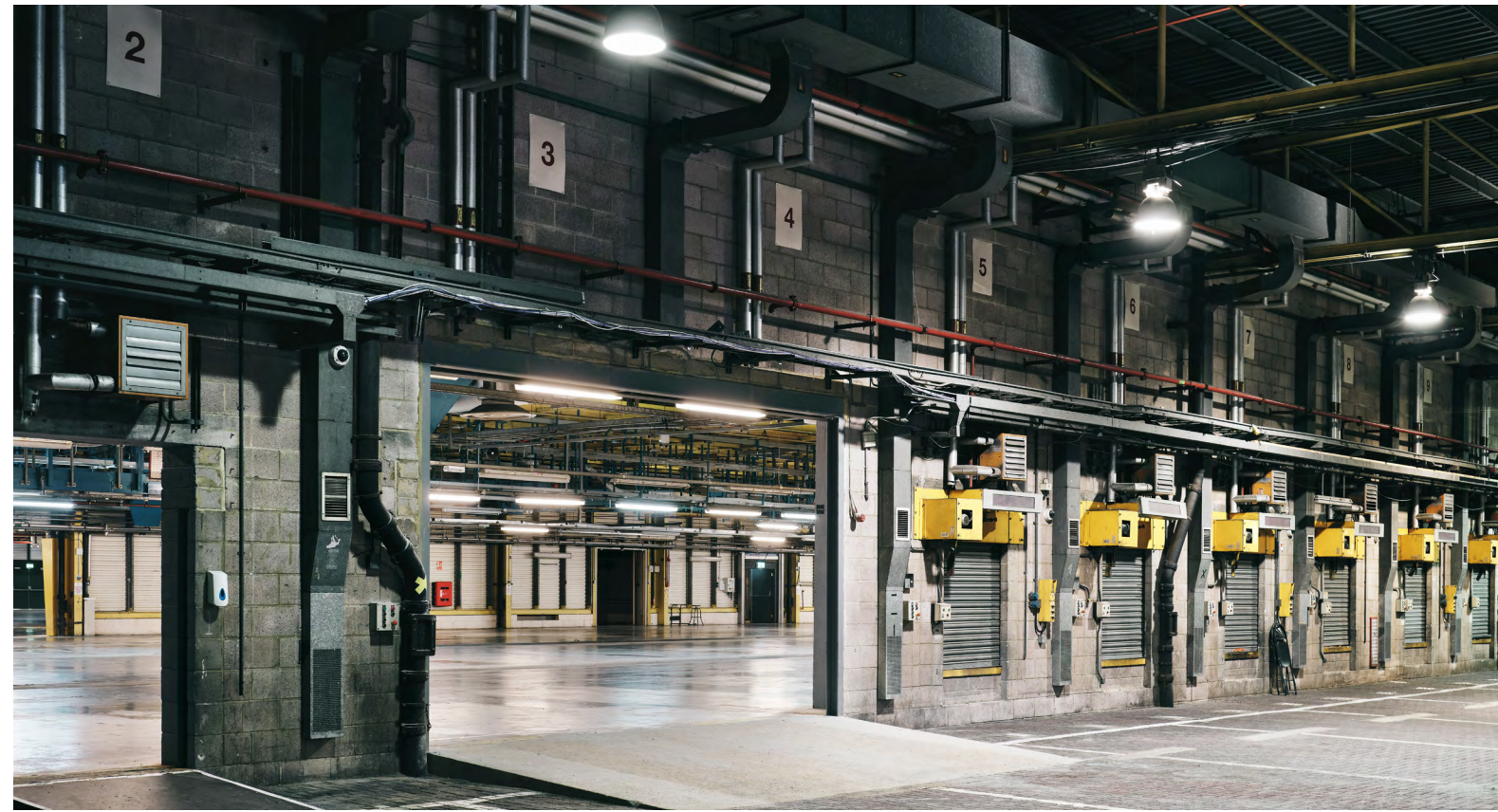
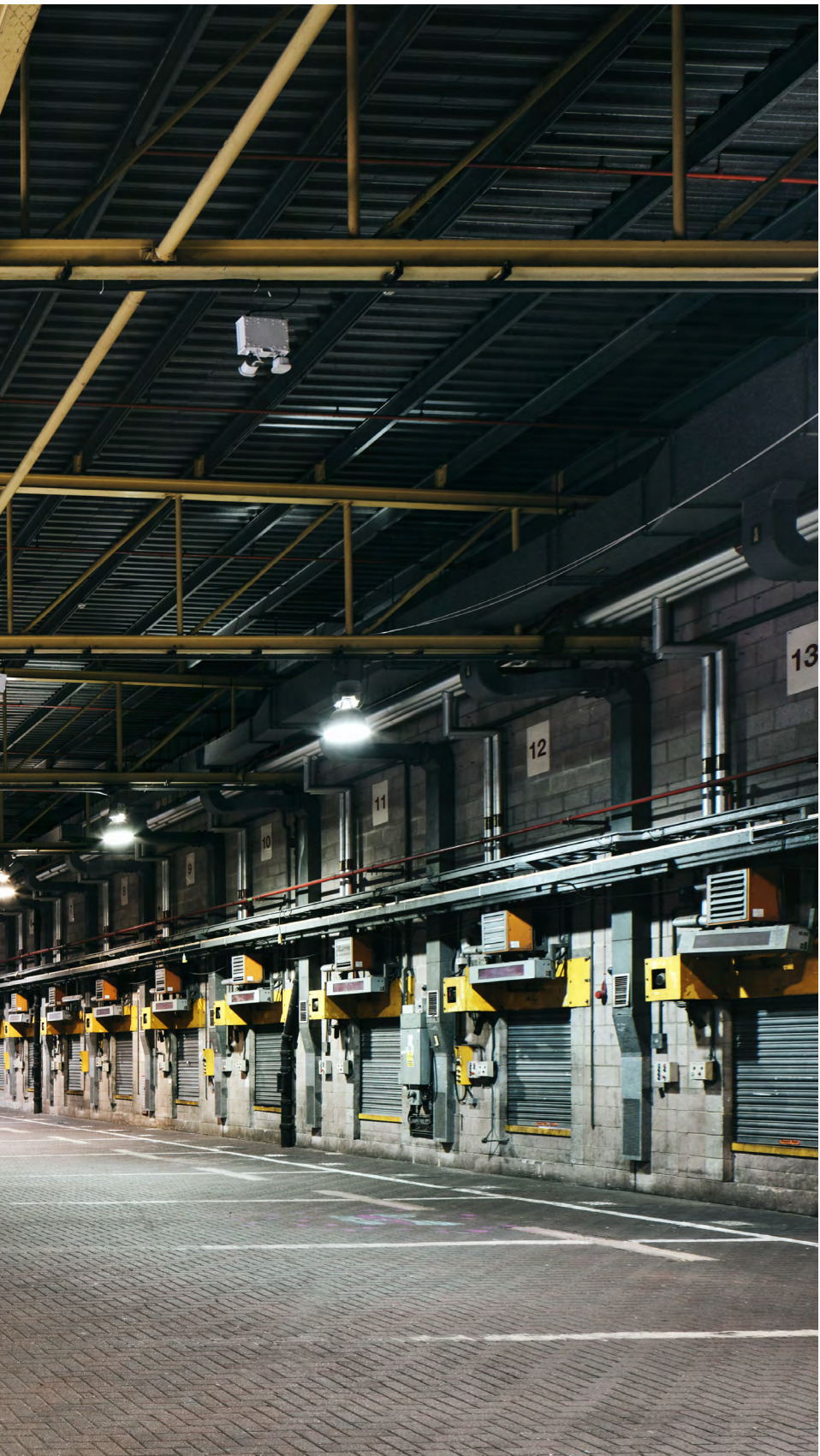
CONTAINER YARD

1,014 M²



VANWAY

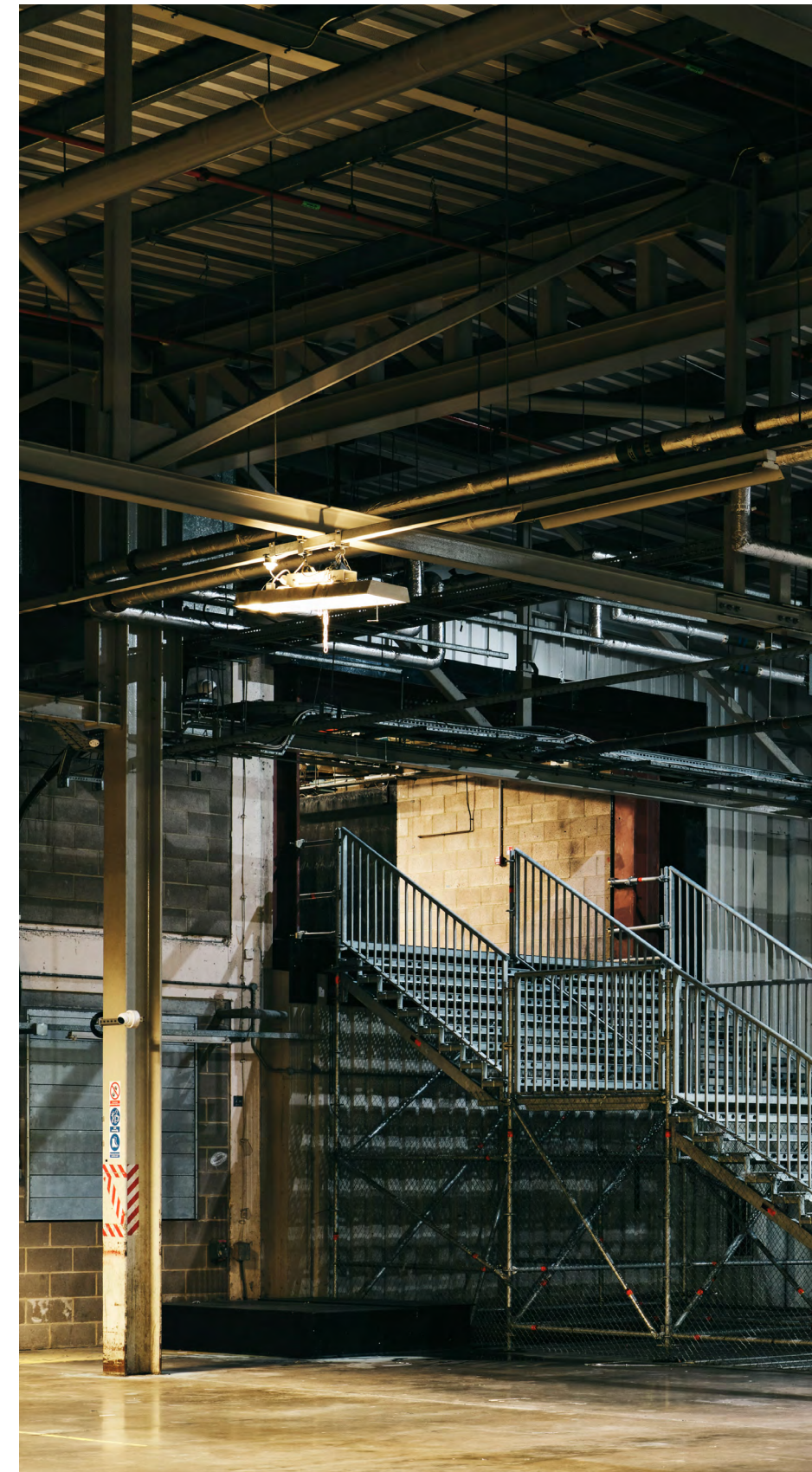
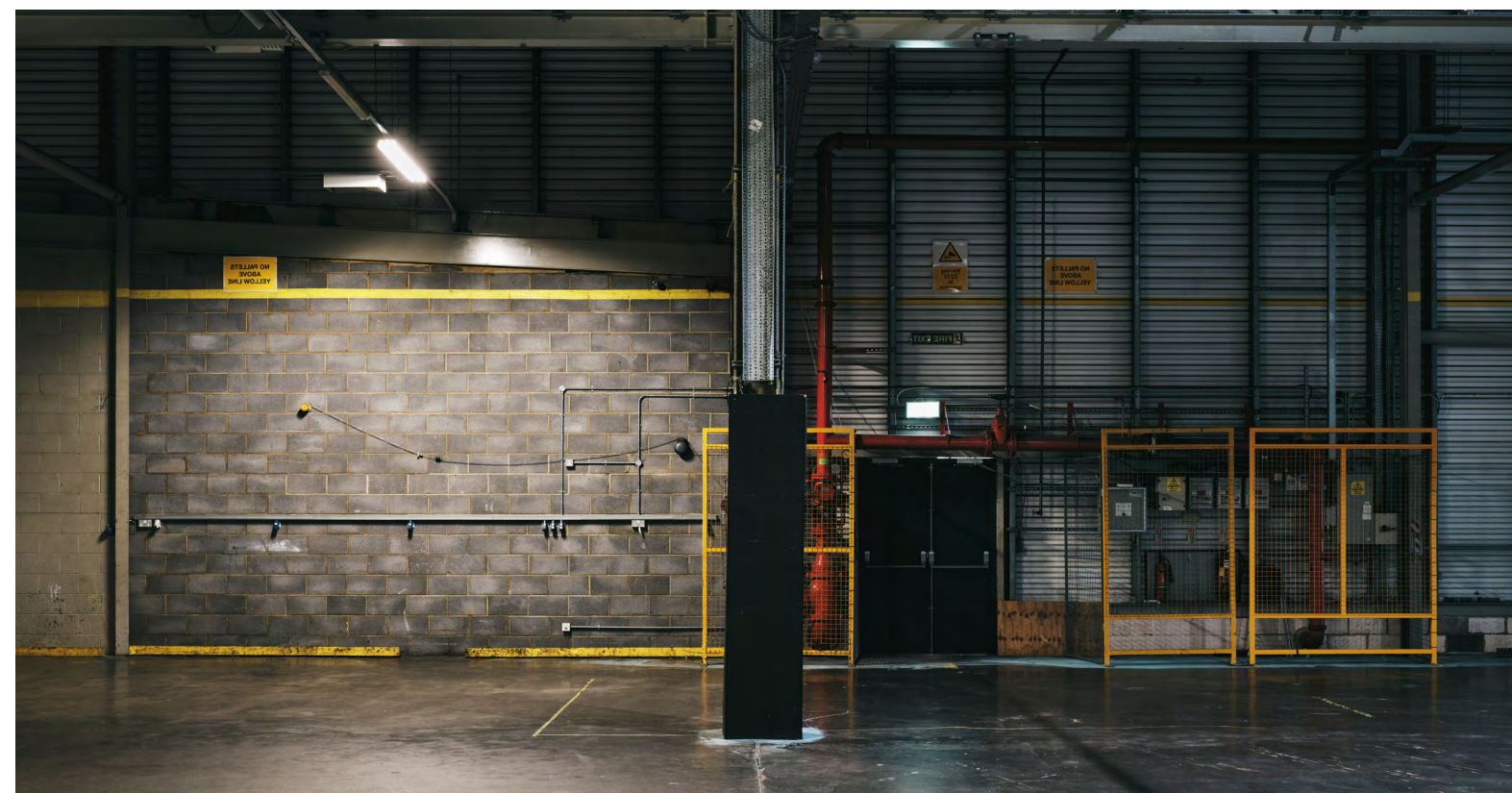
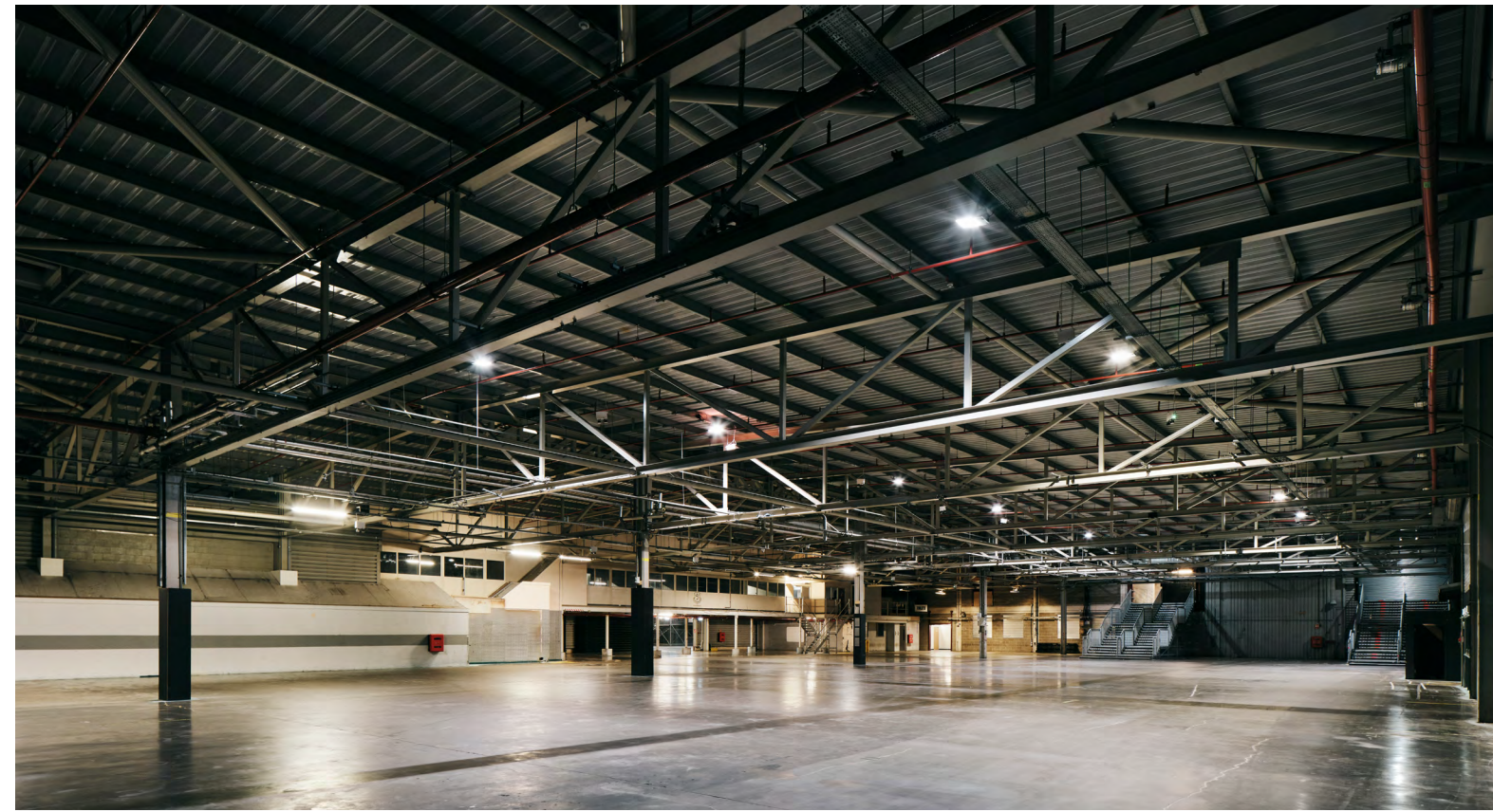
1,300 M²



PUBLISHING

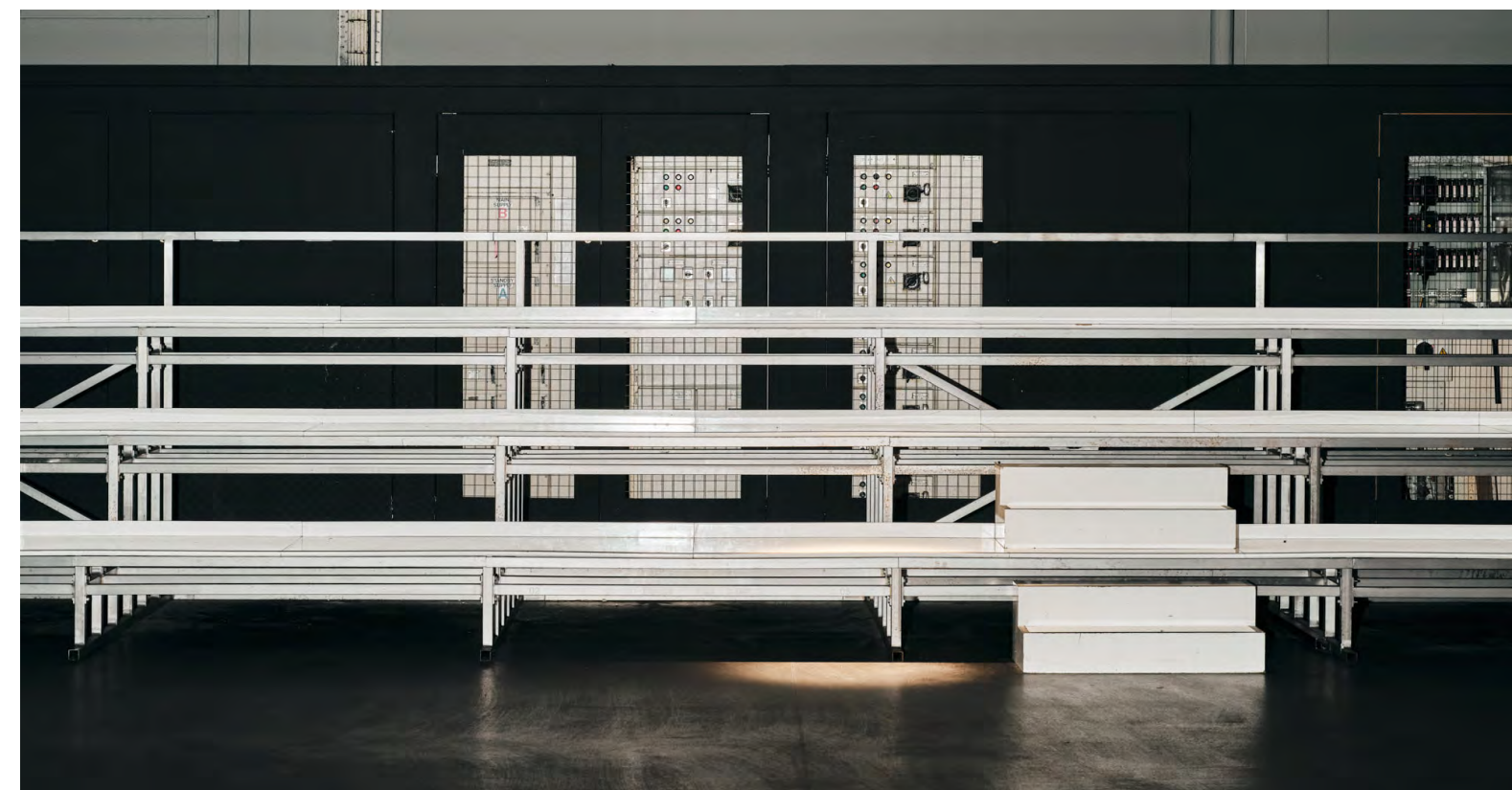
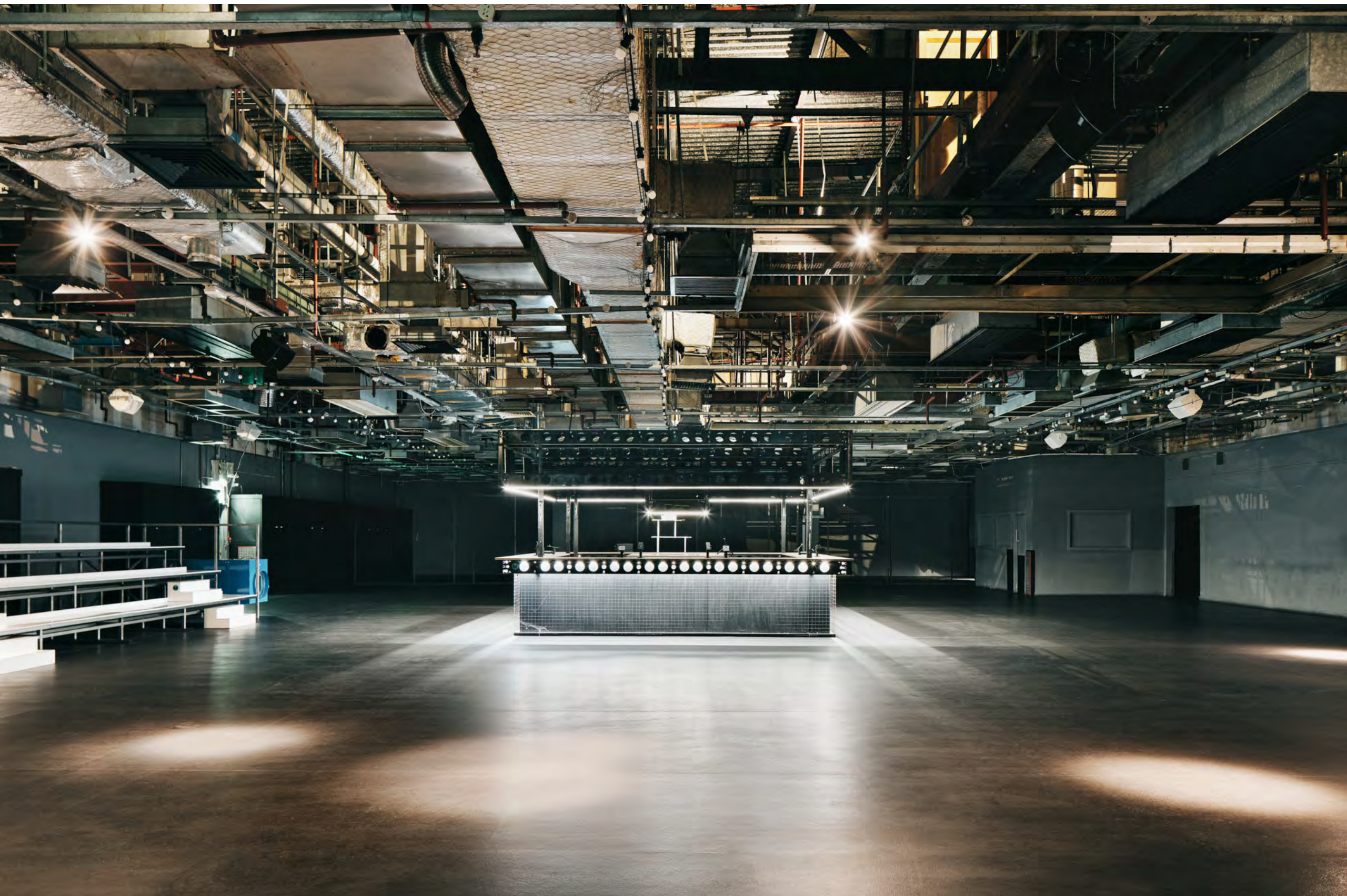
1,792 M²





CONTROL ROOM

736 M²



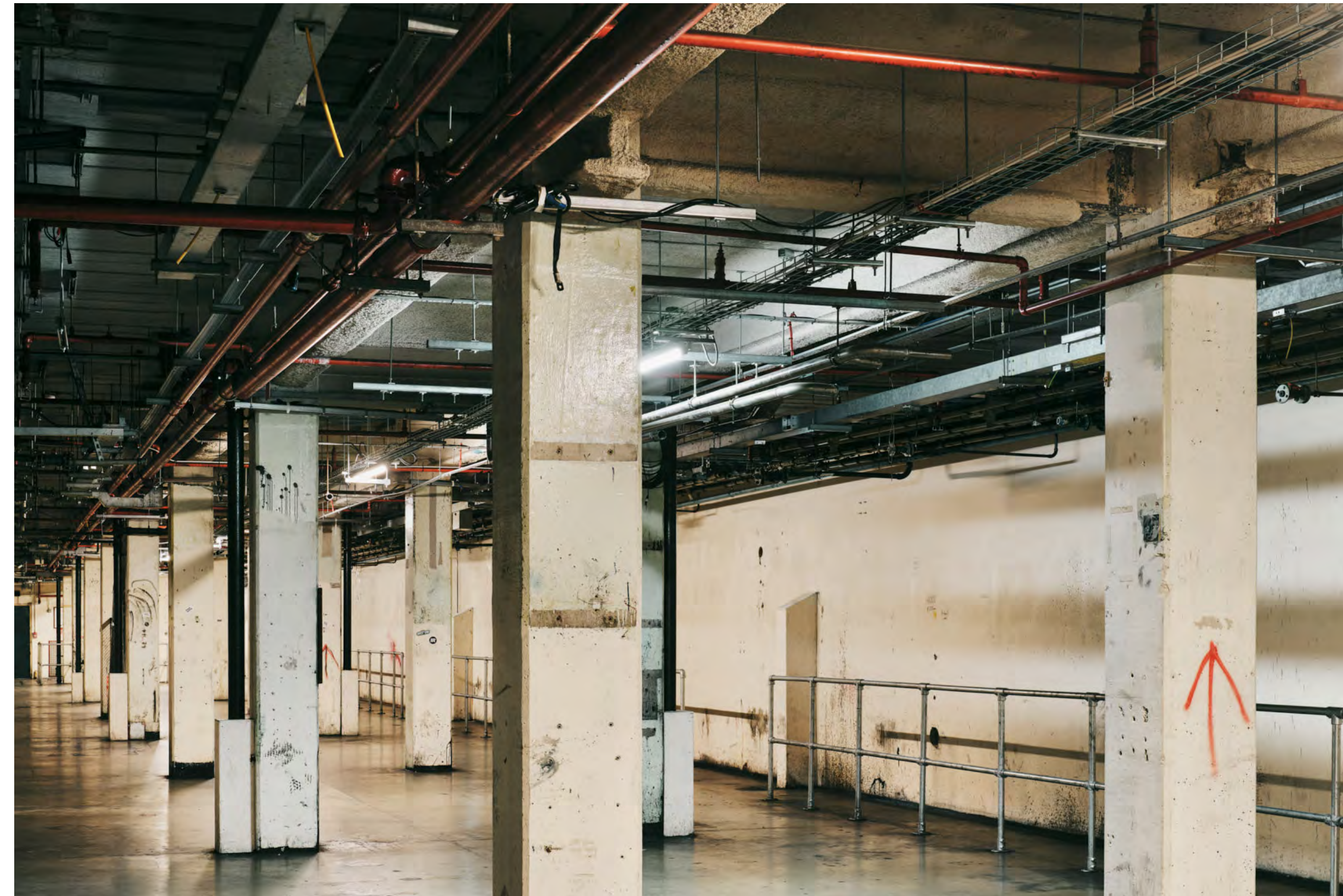
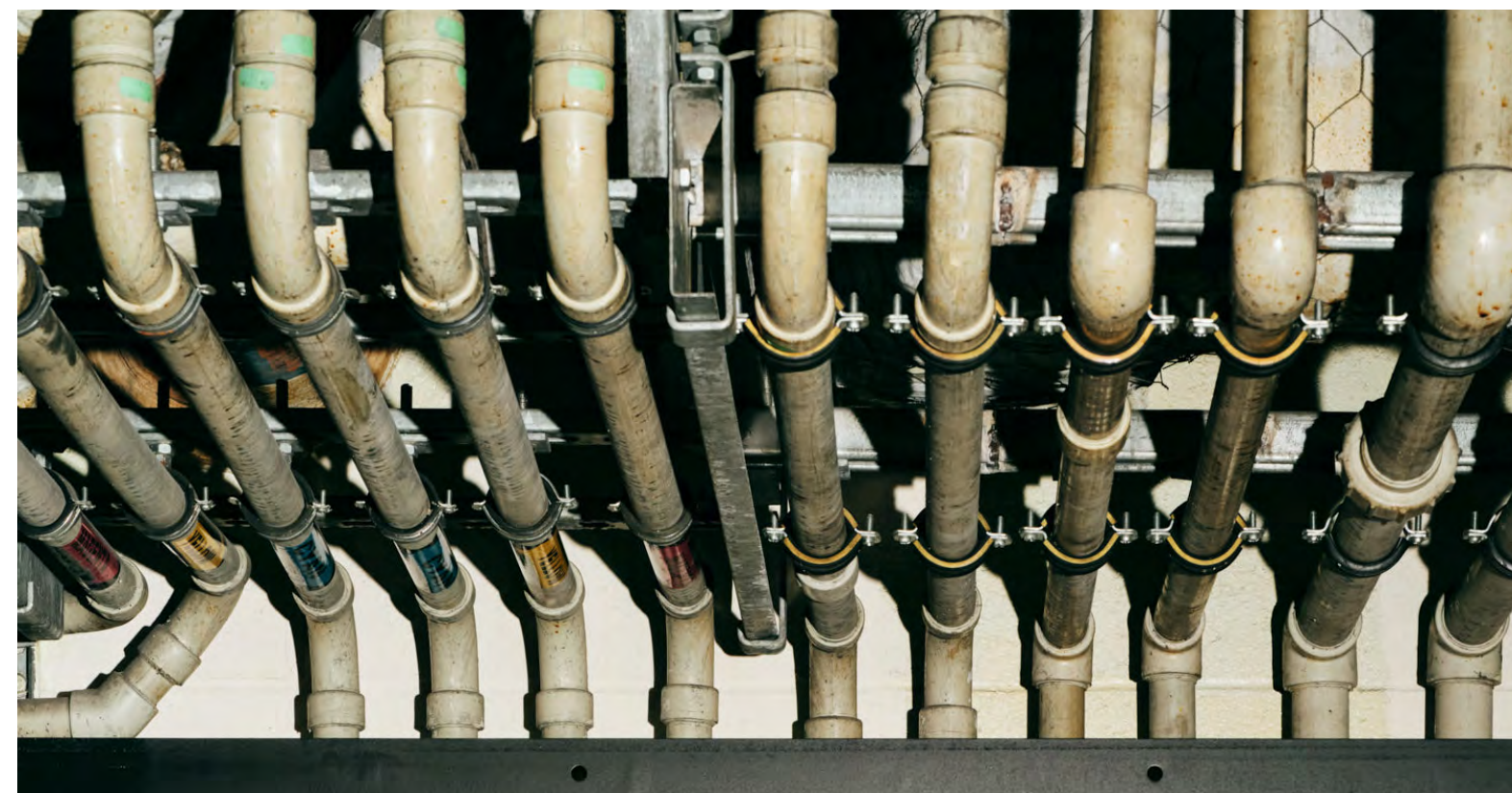
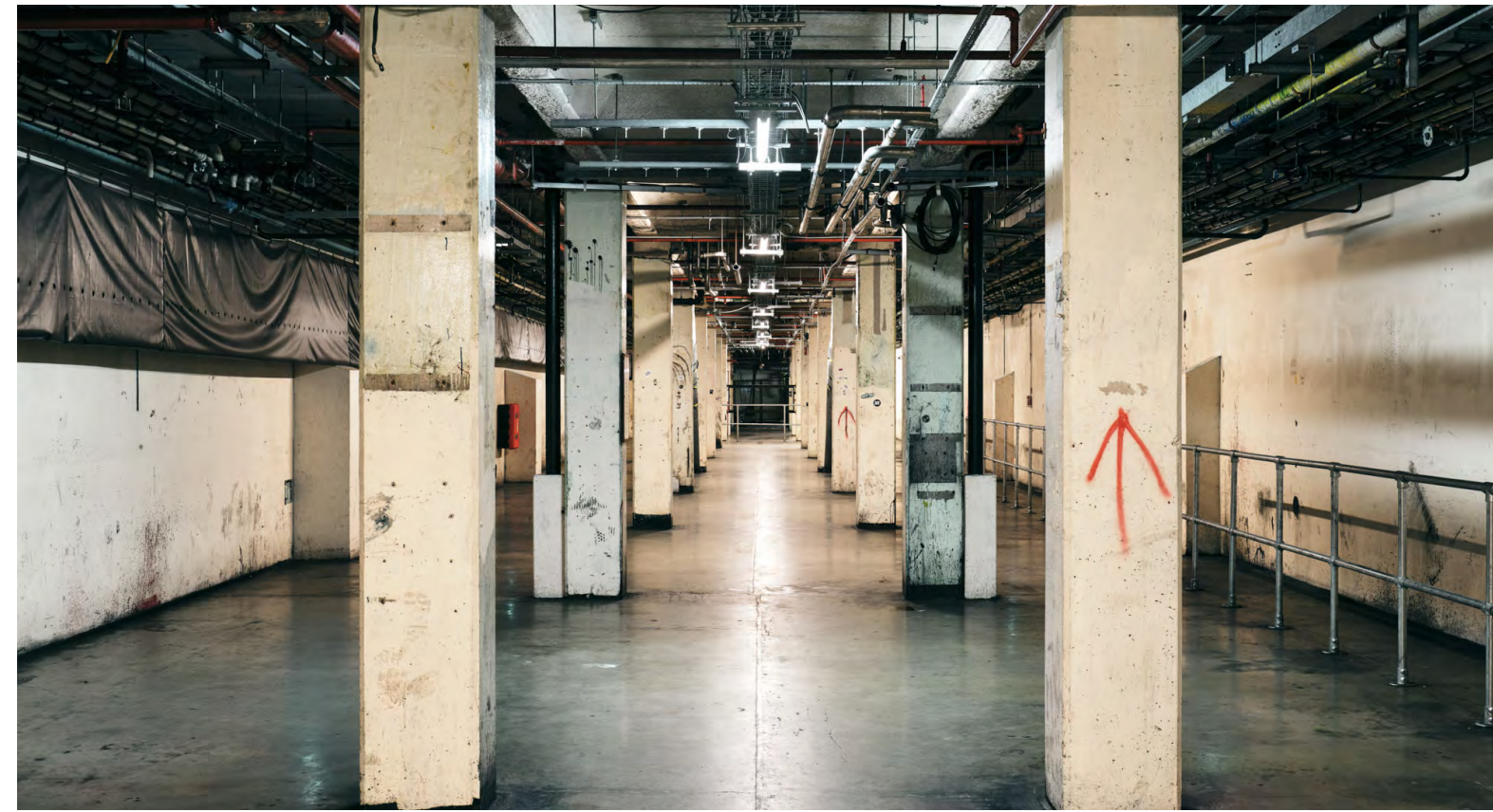
PRESS HALLS

3,328 M²



INKWELLS

1,003 M²



THE ROOFTOP



CAR PARK



FAQS

QUOTES

From initial enquiry the sales team will provide dry hire fees and indicative additional charges including but not limited to: cleaning, security, building manager, medical cover, heating, Wi-Fi, health & safety, production and catering.

PRODUCTION

The venue's in-house production team is Vibration Design & Production. For a quote, please contact Niall Spierin at niall.spierin@printworkslondon.co.uk. Due to the nature of the building, all rigging including motors and trussing, and power distro, must be delivered in-house. A client wishing to use an external production supplier will be subject to a buy-out fee of £3,000 +VAT plus 10% commission on the total kit spend.

DAMAGE DEPOSIT

A damage deposit of a minimum of £1,000 for small film shoots and £5,000 for all public / private events is required. The deposit will be returned, if no damage caused, within 14 days post event.

LICENSING

The venue has a premises licence which covers entertainment, sporting events, live & recorded music, provision and sale of alcohol and late night refreshments. Licenced hours for these are: Sunday – Thursday 10:00 – 01:00 and Friday – Saturday 10:00 – 02:00.

The venue's noise management plan needs to be adhered to at all times. For further information, please refer to the Venue Manual.

The venue holds a PRS licence. You are required to submit details of any music that will be played at your event, and charged in accordance to standard PRS rates.

CAPACITY

Printworks can host up to 6,000 people for events. Individual space capacities are subject to event activities and floorplans .

POWER

A full venue power plan and socket ratings is available on request. Charges are dependent on supplies accessed and duration of use.

PAYMENT

All fees, including those related to suppliers, are payable in full prior to access on site. Upon confirmation, your Sales Manager will confirm your payment plan, which is usually 50% of venue hire and a signed contract within two weeks, and the remaining 50% one month prior to the event. Once a signed contract is received, the client is liable for cancellation fees as stipulated in the venue hire agreement.their event for approval in advance of release to the public domain. All events must not be advertised prior to the sales team receiving a signed contract.

SUPPLIERS

Printworks work with a number of carefully selected suppliers who are fully trained and inducted on the venue. They will be able to give the best advice on your requirements with respect to the venue.

CREW

Five Star Crew

Jess Garner
jess@fivestarcrow.co.uk
0786 938 8099

CATERING

Create

Kaly Aluvihare
create.sales@chandcogroup.com
020 8944 4900

KERB

Toby Chaplin
events@kerbfood.com
074 7534 8772

Moving Venue

Paige Norman
pnorman@movingvenue.com
0208 102 8990

MEDICAL

Quad London

Paul Saddlington
info@quadmedical.co.uk
07904 706 660

PRODUCTION, RIGGING & POWER

Vibration Design & Production

Niall Spierin
niall.spierin@vibration-group.com
07947 898 666

SECURITY

Five Star Security

Steve Domoney
steve@fivestarsec.co.uk
07853 800 792

TRAFFIC MANAGEMENT & STEWARDING

The Last Mile

Brian Goodwin
Brian@thelastmile.uk
020 8058 8851

WIFI

Noba

Nick Taylor
Nick@noba.co.uk
020 3440 4610

CLEANING

A1 Cleaning

Angela Cross
cleaners@a1eventandexhibitioncleaners.co.uk
020 8523 1516

CONTACT

020 8498 4934
printworkslondon.co.uk/hire
hire@printworkslondon.co.uk
[@printworkslondonhire](https://www.instagram.com/printworkslondonhire)

Printworks London,
Surrey Quays Rd,
London SE16 7PJ