



# VENUE BROCHURE

**PRINTWORKS**  
LONDON



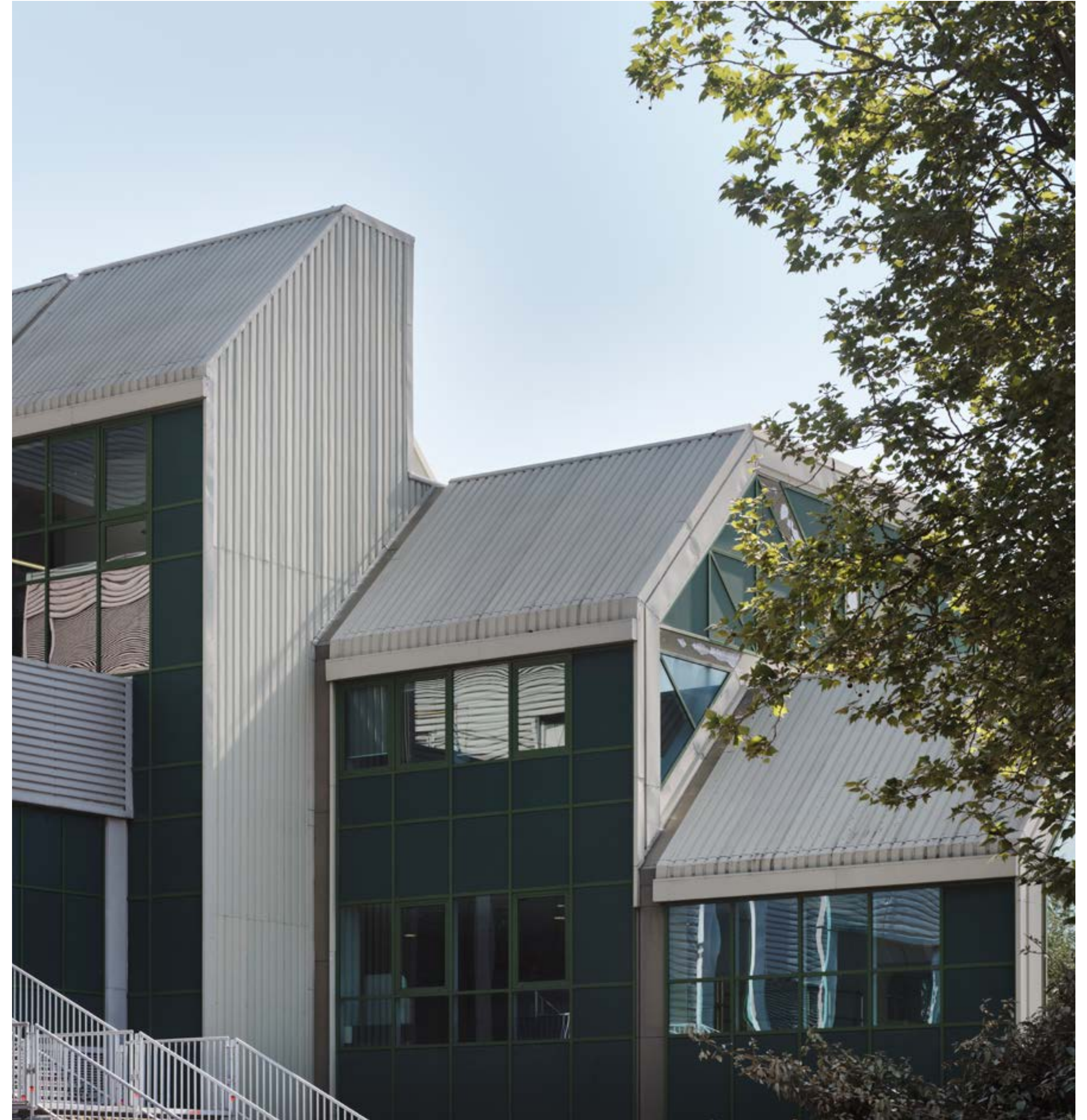
# YOUR SPACE. YOUR STORIES.

## HISTORY

Printworks London (formerly Harmsworth Quays) was established in the docklands in 1989 as western Europe's largest print facility, and for 24 years The Evening Standard, The Daily Mail and Metro newspapers rolled off its presses. This unique site Wembraced a new lease of life in 2017, when the former factory's warehouses and magnificent Press Halls have been revived as ground-breaking, multi-purpose event spaces.

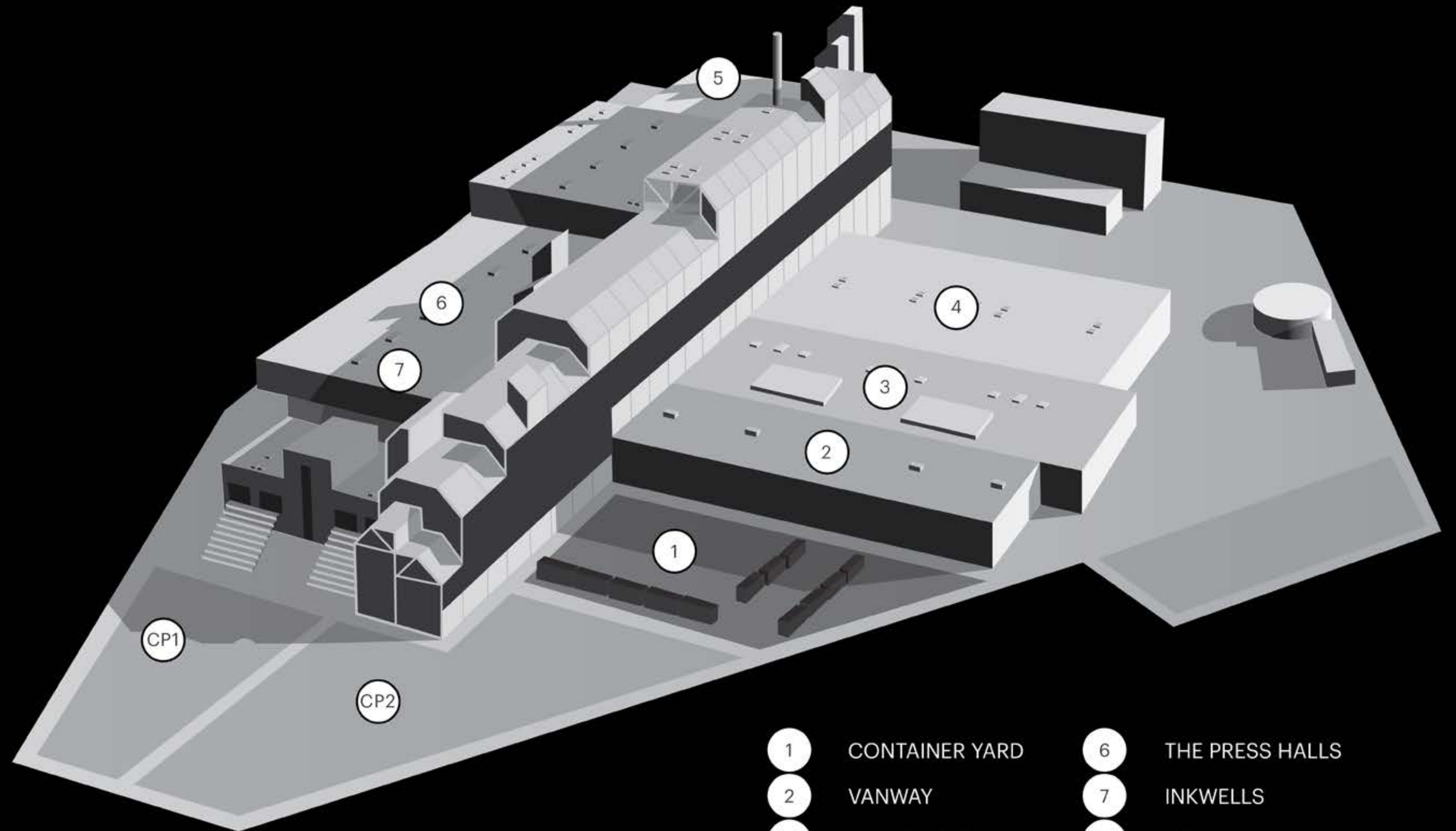
## THE VENUE

Printworks comprises 6-acres of private, gated land, with seven event spaces arranged over multiple levels with a maze of corridors and office space. The venue offers over 12,800 m<sup>2</sup> of versatile, industrial event space with a capacity of 6,000 and a 2am licence on weekends. A further 998 sq.m of outdoor space is also available, as well as parking for crew and production vehicles. The site offers producers, agencies and brands masses of creative, flexible and inspiring infrastructure. Located in Canada Water, it offers transport links from the City, central London and Canary Wharf. Described by Time Out as one of the city's most vibrant, post-industrial venues, Printworks is the ultimate blank canvas for conferences, exhibitions, experiential events, concerts, product launches and filming.





# OVERVIEW MAP



- |   |                |     |                 |
|---|----------------|-----|-----------------|
| 1 | CONTAINER YARD | 6   | THE PRESS HALLS |
| 2 | VANWAY         | 7   | INKWELLS        |
| 3 | PUBLISHING     | CP1 | CAR PARK 1      |
| 4 | HSBC           | CP2 | CAR PARK 2      |
| 5 | CONTROL ROOM   |     |                 |

# DIMENSIONS AND CAPACITY

\*to lowest point of festoon

## Key Info

Maximum capacity:	6,000
Maximum available space:	12,819 m <sup>2</sup>
Power	3 Phase
Crew Parking	100+ spaces
License:	Sunday to Thursday until 1am, Fridays and Saturdays until 2am

Spaces	L (m)	W (m)	H (m)	M <sup>2</sup>	Standing	Theatre	Dinner	Cabaret
Container Yard	39	26	5.2*	1,014	1,200	-	-	-
Vanway	65	20	6	1,300	1,200	1,000	700	550
Publishing	64	28	2.7	1,792	1,200	1,000	700	550
HSBC	66	35	5	2,310	2,500	1,800	1,000	720
Control Room	32	23	2.8	736	350	150	100	80
Inkwells	118	8.5	2.7	935	1000	-	-	-
Press Halls during music season (May – Sept)								
Live Side	65	13	16.8	845	2,500	1,130	670	830
Electronic Side	80	13	16.8	1,040	2,500	-	-	-
Press Halls outside music season (May – Sept)								
Live Side	88	13	16.8	1,144	3,000	1,500	910	730
Electronic Side	131	13	16.8	1,703	3,000	-	-	-



# CONTAINER YARD

Container Yard offers 1,014 m<sup>2</sup> of outdoor space and is enclosed by large black shipping containers, providing the ideal urban backdrop for festival style events featuring street food vendors.

39m (L) x 26m (W) x 5.2m\* (H)  
\*to lowest point of festoon

**Capacity: 1,200**

Standing: 1,200

\*Capacities may vary subject to seating, production and activities.

# 1,014 M<sup>2</sup>





# VANWAY

Vanway once housed the final stage of the printing process, in which vans would collect newspapers hot off the press for UK distribution. With original working features, the space is accessed through large industrial shutter doors. Vanway is an excellent space for unique product launches and performances.

# 1,300 M<sup>2</sup>

65m (L) x 20m (W) x 6m (H)

**Capacity: 1,200**

Standing: 1,200 | Theatre 1,000 | Dinner 700

\*Capacities may vary subject to seating, production and activities.





# PUBLISHING

1,792 M<sup>2</sup>

Publishing was referred to as 'The chapel' in its factory days and still retains original machinery in its ceiling, providing the perfect industrial backdrop for events. With ample power and operational flexibility, this unique space offers the ability to deliver small to large scale productions, fantastic for filming and experiential events.

64m (L) x 28m (W) x 2.7m (H)

**Capacity: 1,200**

Standing: 1,200 | Theatre 1,000 | Dinner 700

\*Capacities may vary subject to seating, production and activities.





# HSBC

HSBC stands for 'High Speed Bagging Company' and once housed a huge production line for the insertion of CDs, magazines and leaflets into the newspapers by hand. At 2,310 sq. m, this is the largest open floor space within the Printworks complex. Hire of HSBC also includes a number of smaller offices overlooking the space, ideal for production teams and smaller meetings.

# 2,310 M<sup>2</sup>

66m (L) x 35m (W) x 5m (H)

**Capacity: 2,500**

Standing: 2,500 | Theatre 2,100 | Dinner 1,250

\*Capacities may vary subject to seating, production and activities.





# CONTROL ROOM

Control Room was once the plate making workshop in the print factory and is now a newly refurbished VIP room with slick furnishings and bespoke steel structure bars. Offering 736 m<sup>2</sup> of versatile space, Control Room is ideal for private receptions, filming, intimate dinners and training sessions.

32m (L) x 23m (W) x 2.8m (H)

**Capacity: 350**

Standing: 350 | Theatre 150 | Dinner 100

\*Capacities may vary subject to seating, production and activities.

# 736 M<sup>2</sup>





# PRESS HALLS

# 3,328 M<sup>2</sup>

The Press Halls are the jewel in Printworks' crown and retain original printing press machinery and industrial features. The space is soundproof as it once printed papers 24-hours a day, seven days a week. It is comprised of two areas; The Live Box and Main Hall, when combined offer 3,328 m<sup>2</sup> of floor space that can accommodate larger scale events.

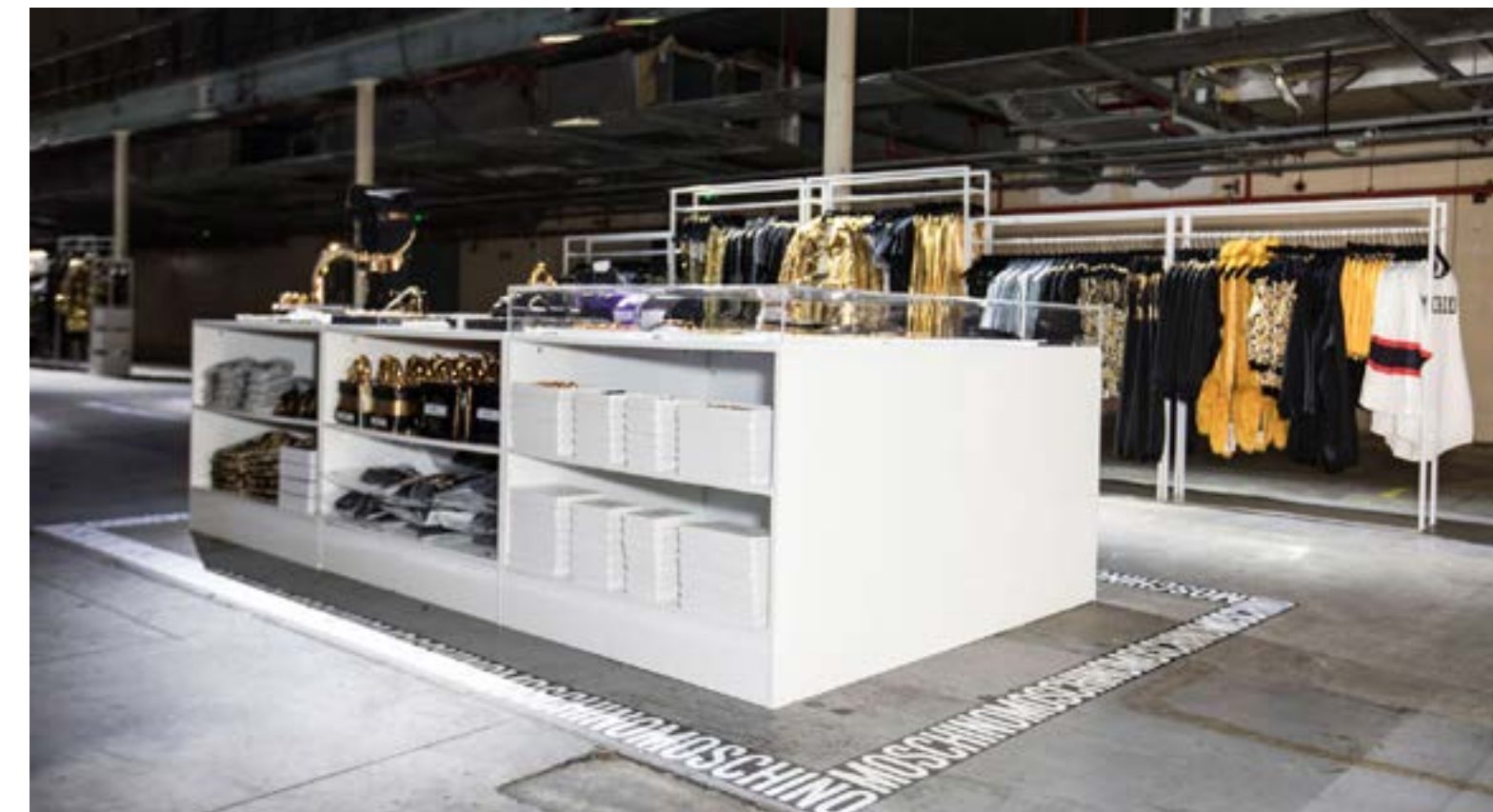
Main Hall: 131m (L) x 13m (W) x 16.8m (H)

Live Box: 88m (L) x 13m (W) x 16.8m (H)

## Capacity: 3,000

Standing: 3,000 | Theatre 1,500 | Dinner 910

\*Capacities may vary subject to seating, production and activities.





# INKWELLS

# 1,003 M<sup>2</sup>

With colonnades of beaten concrete pillars and a stripped-back, industrial aesthetic including low ceilings and exposed pipework. Inkwells offers a raw and versatile space in Printworks' iconic venue. Totalling 1,003 m<sup>2</sup> of space and a maximum standing capacity of 700, Inkwells provides a more intimate space complementing the stark contrast of the mammoth halls above.

118m (L) x 8.5m (W) x 2.7m (H)

**Capacity: 1,000**

Standing: 1,000

\*Capacities may vary subject to seating, production and activities.





# FAQS

## QUOTES

From initial enquiry the sales team will provide dry hire fees and indicative additional charges including but not limited to: cleaning, security, event marshals, building manager, medical cover, heating, Wi-Fi, health & safety, production and catering.

## PRODUCTION

The venue's in-house production team is Vibration Design & Production. For a quote, please contact Niall Spierin at [niall.spierin@printworkslondon.co.uk](mailto:niall.spierin@printworkslondon.co.uk). Due to the nature of the building, all rigging including motors and trussing, and power distro, must be delivered in-house. A client wishing to use an external production supplier will be subject to a buy-out fee of £3,000 +VAT plus 10% commission on the total kit spend.

## DAMAGE DEPOSIT

A damage deposit of a minimum of £10,000 for all public / private events is required. The deposit will be returned, if no damage caused, within 14 days post event.

## LICENSING

The venue has a premises licence which covers entertainment, sporting events, live & recorded music, provision and sale of alcohol and late night refreshments. Licenced hours for these are: Sunday – Thursday 10:00 – 01:00 and Friday – Saturday 10:00 – 02:00.

The venue's noise management plan needs to be adhered to at all times. For further information, please refer to the Venue Manual.

The venue holds a PRS licence. You are required to submit details of any music that will be played at your event, and charged in accordance to standard PRS rates.

## CAPACITY

Printworks can host up to 6,000 people for events. Individual space capacities are subject to event activities and floorplans

## ADVERTISING & PROMOTION

All clients must submit advertising and promotional material in relation to their event for approval in advance of release to the public domain. All events must not be advertised prior to the sales team receiving a signed contract.

## PAYMENT

All fees, including those related to suppliers, are payable in full prior to access on site. Upon confirmation, your Sales Manager will confirm your payment plan, which is usually 50% of venue hire and a signed contract within two weeks, and the remaining 50% one month prior to the event. Once a signed contract is received, the client is liable for cancellation fees as stipulated in the venue hire agreement.their event for approval in advance of release to the public domain. All events must not be advertised prior to the sales team receiving a signed contract.



# SUPPLIERS

Printworks work with a number of carefully selected suppliers who are fully trained and inducted on the venue. They will be able to give the best advice on your requirements with respect to the venue.

## BRANDING & PRINTING

### **N2 Display**

Mick Woodward  
mick.woodward@n2display.com  
01992 440 333

## CREW

### **Five Star Crew**

Jess Garner  
jess@fivestarcrow.co.uk  
0786 938 8099

## CATERING

### **Create**

Kaly Aluvihare  
create.sales@chandcogroup.com  
020 8944 4900

### **KERB**

Toby Chaplin  
events@kerbfood.com  
074 7534 8772

### **Moving Venue**

Paige Norman  
pnorman@movingvenue.com  
0208 102 8990

## MEDICAL

### **Quad London**

Paul Saddlington  
info@quadmedical.co.uk  
07904 706 660

## PRODUCTION, RIGGING & POWER

### **Vibration Design & Production**

Niall Spierin  
niall.spierin@vibration-group.com  
07947 898 666

## SECURITY

### **Five Star Security**

Steve Domoney  
steve@fivestarsec.co.uk  
07853 800 792

## TRAFFIC MANAGEMENT & STEWARDING

### **The Last Mile**

Brian Goodwin  
Brian@thelastmile.uk  
020 8058 8851

## WIFI

### **Noba**

Nick Taylor  
Nick@noba.co.uk  
020 3440 4610

## CLEANING

### **A1 Cleaning**

Angela Cross  
cleaners@a1eventandexhibitioncleaners.co.uk  
020 8523 1516



# CONTACT

020 8498 4934  
[printworkslondon.co.uk/hire](http://printworkslondon.co.uk/hire)  
[hire@printworkslondon.co.uk](mailto:hire@printworkslondon.co.uk)  
[@printworkslondonhire](https://www.instagram.com/printworkslondonhire)

Printworks London,  
Surrey Quays Rd,  
London SE16 7PJ